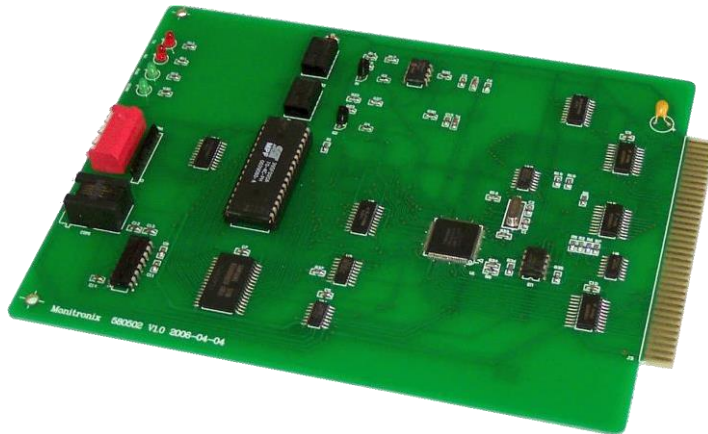


MT580502 - Data Sheet

DLT Bus Interface Board c/w ADC Cable Pressure Monitoring & Control System



Introduction

The MT580502 board is an advanced DLT (Dedicated Line Transducer) bus interface board as a replacement for the Sparton 530502/LED board in 5300 cable pressure monitoring and control system. With its on-board ADC function, it can work like the Sparton system without any extra ADC board, so its system structure can be simplified, and operation performance is improved.

Features

- Direct plug-in replacement for existing Sparton 530502/LED board.
- Support Sparton ADC board function.
- 16 bits microprocessor, 20MHz.
- Compatible with dedicated line transducers, Toll/Trunk cable w/contactors.
- Automatically monitor the 580503 DLT switch matrix board with LEDs, up to 3 boards and max. 108 DLT inputs.
- Average scanning time of 1 second per input.
- DIP switch for address setting.
- Serial communication port for local debug.
- Supports firmware upgrade.
- LED indicators.
- High reliability

Contact:

No part of this document should be reproduced without the prior approval of Monitronix.

General Characteristics

The MT580502 board is an advanced DLT (Dedicated Line Transducer) bus interface board which is used to replace the Sparton 530502/LED board in 5300 cable pressure monitoring and control system. With its on-board microprocessor, it can control the 580503 DLT switch matrix board to switch their inputs which are connected to dedicated line transducers and then to pass selected transducer on to itself. After that, this MT580502 board reads the DLT and then sends the readings to the SCCM. Through addressing function the 580502 board can monitor up to 3 DLT switch matrix boards and measure up to 108 inputs. Besides, because the MT580502 board is designed with ADC function like Sparton ADC board, without any extra ADC board it can work with full air pressure monitoring functions. In respect of use, the MT580502 board fully simulates the Sparton board's signals so that it can directly replace the existing Sparton board without any change to make itself easy to use.

Technical Characteristics

Memory Sizing	
Program Memory RAM	<ul style="list-style-type: none"> • 256K • 512MB
Environmental Conditions	
Temperature <ul style="list-style-type: none"> • Continuous Operation • Transportation and storage Relative Humidity	<ul style="list-style-type: none"> • 0° to +50° C • -40° to +70° C • 0 to 95% non-condensing
Power	
Input Voltage Power Consumption	<ul style="list-style-type: none"> • 5VDC powered inside 5300 rack • 2 Watts Maximum
Physical Properties	
Size RS232 Serial Port	<ul style="list-style-type: none"> • 202 x 146mm PCB • RJ11
Measurement	
Input Resolution Average scan time	<ul style="list-style-type: none"> • Up to 108 DLT inputs (with up to 3 DLT switch matrix board 580503) • 0.5% full range • 1 second per input

Email: technicalsupport@vpsolutionsgroup.com **Web:** www.vpsolutionsllc.com

© Monitronix Technology co., Ltd. 2005. The information in this document is subject to change without prior notice. Monitronix does not assume responsibility for any errors in fact or design in this publication. The publication is provided for general information only and shall not form part of any contract.
580502 Issue 1

